



ASSET CONNECTIVITY

ANYTIME ANYWHERE



MACHINE TO MACHINE
(M2M)



INTERNET OF THING
(IOT)



MOBILE SATELLITE SERVICE
(MSS)

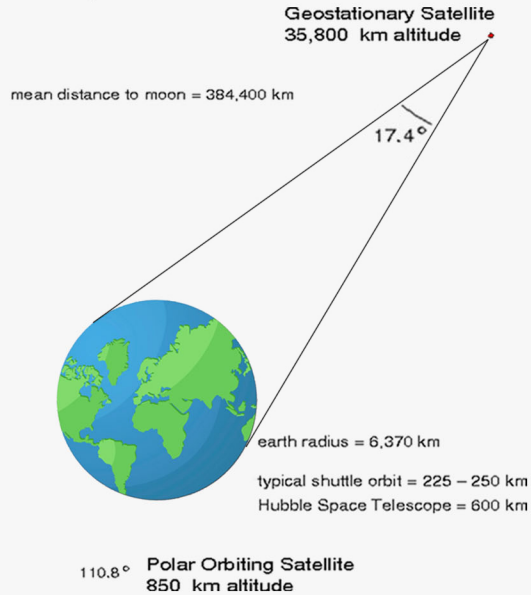


MARITIME

WHY IRIIDIUM SATELLITE ?

- Satellite network with 66 satellite
- Global coverage with Polar Orbiting Satellite on Low Earth Orbit (850 Km)

- Delay of transmission is low with reduced echo
- Small device with low power consumption and Omni Directional Antennas
- Marine standard quality (IP68 & IP69)



MARITIME



AVIATION



GOVERNMENT



ENTERPRISE



IRIDIUM BLUETRAKER

- Complete legal document
- 66 satellite with Polar Orbiting Satellite on Low Earth Orbit
- Hybrid automatic 2-way communication (Satellite & GPRS)
- Double shell construct housing (waterproof)
- Resistant to UV light & harsh temperature from -25C to 55C
- Monitoring Application (Web, Android, Dekstop)
- Real time
- Lesser startup process compare to other satellite

Data Position

- Iridium bluetraker can be set with different parameter for data transmission
- 1 hour using satellite
- 15 Minute using GSM/GPRS





BlueTraker

The BlueTraker® marine graded terminals are onboard tracking devices with embedded Satellite, GSM/GPRS modems, GPS receiver and backup rechargeable battery. The BlueTraker® terminal's latest generation are offered to the market, upgrading connectivity possibilities to support remote vessels monitoring for various purposes.

BlueTraker® terminal reduces costs automatically and efficiently while using the low-cost GPRS communication.

SmartOne C

Designed for the intelligent management of fixed and mobile assets, the SmartOne C is a practical solution for a multitude of options including:

- 12 different reporting times
- Interval or 24-hour operation mode
- Alternate reporting schedules
- Low battery message

Track intermediate bulk containers, vehicles and boats as a solution to improve your asset's operating efficiency and security.



SmartOne Solar

The SmartOne Solar is the next generation of Globalstar's industry-acclaimed SmartOne product line. While operating on one of the most modern and fastest satellite networks in the world and powered by the sun, this IoT device provides excellent remote monitoring and tracking capabilities.

Solar Powered Satellite-Managed Asset Ready Tracker

Let the SmartOne Solar streamline your M2M operations today!

Iridium Extreme

It's time to raise expectations of what a satellite phone should be. Iridium Extreme® combines location awareness, a fully integrated SOS button with included emergency response service, and market leading toughness — letting you take durability, reliability and versatility with you in hand, all over the world.

More than a phone, it is a real mobile, real reliable tracking device with truly global coverage.



Iridium Go



Iridium GO!® creates the first ever reliable global connection for voice calling and text messaging using your own smartphone or tablet, as well as provides enhanced data capabilities offered through optimized apps to meet your unique needs.

No worries. No roaming charges. Just connected and in touch wherever you are, whenever you need, with the devices you rely on every day.

Iridium Pilot

Powered by the world's furthest reaching network, Iridium Pilot is the only reliable truly global connection for broadband voice and data maritime communications – delivering exceptional performance, durability and value, everywhere on the planet.

Iridium Pilot is uniquely engineered to keep ships connected in blazing sun, frigid cold and high winds, over the Earth's entire surface; open ocean or polar regions.



Electronic Eye CCTV



Electronic Eye is a fisheries remote electronic monitoring system with automatic HD still image capture for fisheries data collection and the monitoring of catch, bycatch and incidental catch.

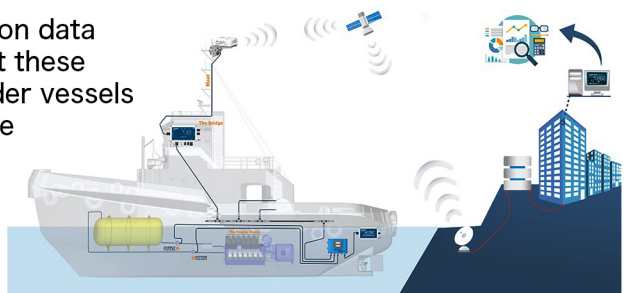
All fishing activities recorded by tamper-proof images with embedded GPS position, date and time.

With the help of these images, the land observer can analyse the fishing activities, quantify the catch, identify species and verify the fishing operations.

Remote Fuel Monitoring System (FMS)

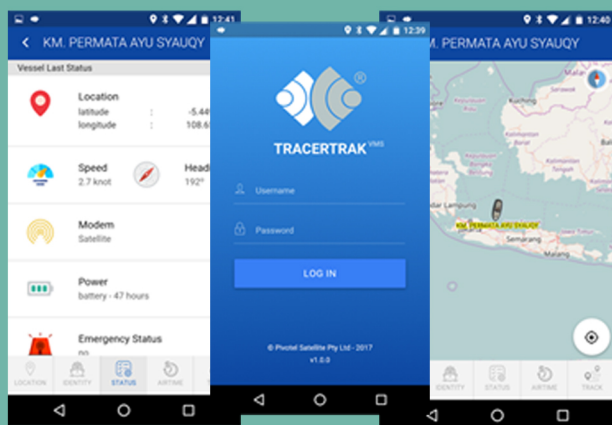
There are various ways how to collect fuel consumption data aboard the vessel. Most of the modern vessels collect these data in onboard computers using ad-hoc analysis. Older vessels do not possess the technical capability and need to be upgraded.

FuelTraker system can be connected to various sensor monitoring systems on various vessels which enables you to pre-define versatile solutions covering the majority of project requirements. FuelTraker is a system through which remote real-time fuel monitoring is established. The system consists of an onboard vessel equipment and remote back office application.

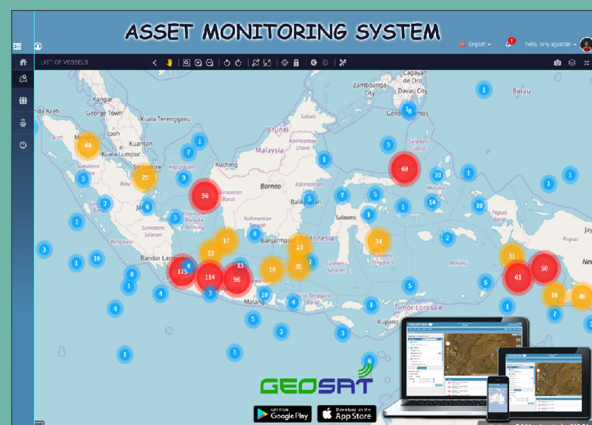




FEATURE





Mobile Application




Web Application



 Jl. Bungur Besar Raya No 85
Kemayoran, Jakarta Pusat
Indonesia 10620

 +62 21 420 5309

 www.geosat.co.id

 sales@geosat.co.id
info@geosat.co.id